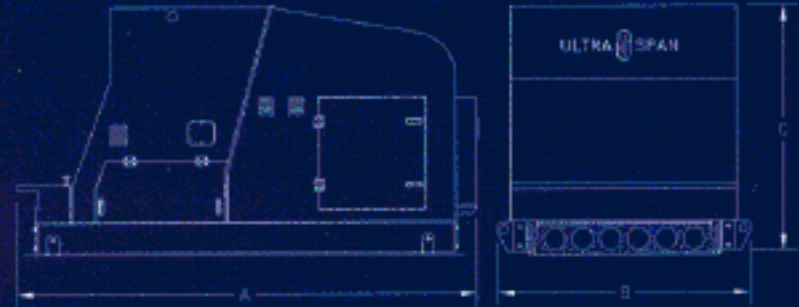


Extruder 20120



Extruder Features

Low noise extrusion (less than 85 dB) with Ultra-Span's "Whisper" Technology.

Extrudes concrete at a rate of up to 2.16 meters (85 inches) per minute, which is easily adjustable to suit your concrete mixing and delivery systems speed and capacity.

High quality slabs: dimensionally accurate, superior finish, optimum concrete density and excellent bond to strand.

Increased profits due to highly efficient trouble free production, reduced maintenance costs and reduced concrete consumption.

Reduced curing time in as little as 6 hours with controlled curing methods.

Longer spans with high load capacity.

Experienced personnel with a commitment to the precast concrete industry allows you access to long term technical support with innovative design and engineering expertise.

Highest international standards, an ISO 9001-2000 company.

Optional accessories allowing for project diversification.

Extruder Specifications

Model 20120

Dimensions

A – Length	315cm (124 inches)
B – Width	165cm (65 inches)
C – Height (from rail)	168cm (66 inches)
Weight (approximate)	2950kg (6500 lb)
Hopper Capacity	1.1m ³ (1.4yd ³) (extensions available)
Ribbon Augers (Patented)	Number 6
Drive Motors	Number 2
Total HP	30
Gear Box	(ratio 25:1) Number 2

Vibration System

Electronic Frequency Inverter	1
Top Vibrator	2
Internal Vibrator	6

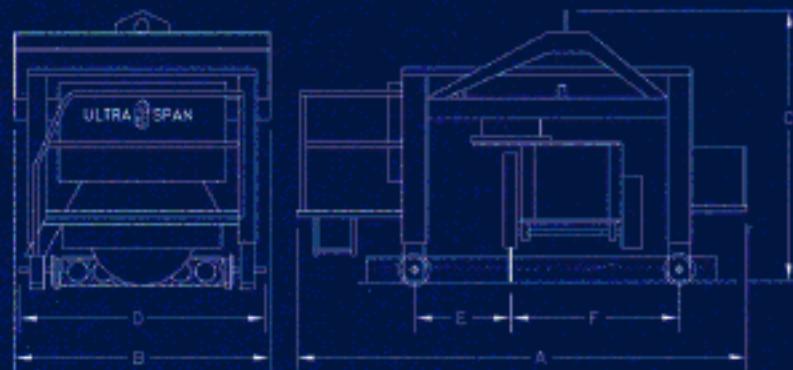
Electrical Consumption

(maximum amps)	
575-600/60 HZ	46
440-480/60 HZ	56
415 /50 HZ	64
380 /50 HZ	69
Concrete Consumption	7.5 lineal m ³ (17.8 lineal ft/yd ³) (max. speed)

Hopper Level Sensor
Variable Speed Drive

Canada Patents 1280273 and 1308882
Other patents pending and in other countries

Cross & Cross/Rip Cut Saw



Saw Features

Cross Cut saw is capable of performing 90° cross cuts directly on the casting bed.

Cross/Rip Cut saw is capable of performing 90° cross cuts and 180° rip cuts directly on the casting bed.

Increased versatility; one saw capable of cutting 15cm (6in) to 40cm (16in) slabs. Provides greater design flexibility for your customer.

Reduced cutting costs; elimination of triple handling and double cutting the product. One person operation. Preset blade speed provides longer blade life and eliminates blade damage caused by operator error. Cross cuts accomplished in as little as one minute-5 seconds. Longitudinal rip cuts as rapid as 7.6m (25ft)/minute. Laser light guidance allows for fast setup and greater accuracy of cut.

Dependable and durable; manufactured to international quality standards (ISO 9001-2000). Solid state electrical circuitry designed for optimum performance. All controls are interlocked eliminating any possibility of damage caused by activating two or more commands at the same time. Safe working platform, excellent visibility. Extremely low maintenance.

Saw Specifications

A	374cm (147 inches)
B	203cm (80 inches)
C	160cm (63 inches) (retracted) 224cm (88 inches) (extended)
D	182cm (72 inches)
E	104cm (41 inches)
F	135cm (53 inches)
Saw Motor	60 HP @ 380-600V
Weight	2495kg (5500 lb)
Depth of Cut	0-42cm (0-16 inches)
Saw Blade	
Diameter	800-900mm (32-36 inches)
Speed	1240 RPM

Note: Minimum recommended spacing between beds is 60cm (24 inches)